

July 2016 - June 2017



10 Years ANNUAL REPORT

Transforming community health and well-being through research and evaluation

Executive Introduction



In September 2016, HARC officially turned ten. And what an incredible ten years it's been! Even though I have only been with the organization for five of those ten years, I am incredibly proud of the progress we've made. Here's a brief history of our decade of growth and progress.

HARC was founded in 2006 to provide accurate data at a regional level for the Coachella Valley. To fulfill this mission, HARC pioneered the Coachella Valley Community Health Survey, a triennial phone survey of health, wellness, and quality of life in the region. We've conducted this survey four times, allowing us to measure significant changes over time in our region. Our most recent data was released on January 31, 2017 to an eager public and has been used by hundreds of organizations since.

This data is used to document changes in our region, and to identify health issues that impact our community. For example, it helped to illustrate the impact of the ACA in our region—in 2013, 34% of our adults 18 to 64 were uninsured, a staggering amount. Thanks to local efforts to enroll people in Covered California, this had dropped to less than 14% in 2016. The data is also used to design programs and services to address those needs and obtain funding to support those programs and services. In fact, local organizations have brought in over \$12.8 million in funding when using our data to support their statements of need.

Another area that we've grown in is our customized consulting services. HARC's team of talented researchers can provide many services, including evaluation, needs assessments, and data analysis, among others. Tapping into these skills, we began by providing data consulting services to a single client organization in 2009. Just eight years later, we served a total of 18 different clients in fiscal year 2016-2017. New clients this year included organizations such as Kaiser Permanente, Clinicas de Salud del Pueblo, and the City of Temecula, among others.

We've also launched what is now an annual event in the region, the Coachella Valley Workplace Wellness Awards. I was inspired to create these awards by my background in occupational health psychology, which strives to keep workers happy, healthy, and productive. Through these awards, we've recognized local employers both large and small that are doing great work to protect and promote employee health. We've helped shine a light on exemplary employers and turned the event into a profitable fundraiser for HARC at the same time. We look forward to growing this event and making it a regular feature in the Coachella Valley for years to come.

A major part of HARC's role is to act as a leader in the Coachella Valley community, connecting organizations together so that they may do their best work possible. To this end, we continue to be actively involved in many collaboratives and associations, as illustrated on page 5. I believe this connectedness is key to HARC's success in the future—we must ensure that our networks are strong so that we can collaborate to make a real difference in the region.

Thank you to all our partners and funders for their support; we could not be the resource we are today without you. We look forward to another year of growth and progress.

Sincerely,

A handwritten signature in black ink that reads "Jenna LeComte-Hinely". The signature is written in a cursive, flowing style.

Jenna LeComte-Hinely, PhD
Chief Executive Officer

Table of Contents

Executive Introduction	2
HARC Milestones: Fiscal Year 2016-2017	4 - 5
<i>Coachella Valley Community Health Survey 2016</i>	4
<i>Client Services</i>	4
<i>Collaborations/Initiatives</i>	4
<i>Invited Presentations</i>	5
HARC Services	6
<i>Needs Assessment</i>	6
<i>Program Evaluation</i>	6
<i>Analysis of Existing Data</i>	6
<i>Workplace Wellness</i>	6
<i>Grant Writing</i>	6
<i>Facilitation</i>	6
<i>Training</i>	6
Impact	7
Events	8
Financial Summary 2016-2017	9
Funders/Contributors 2016-2017	9
Board of Directors & Staff	10

“I often say that when you can measure what you are speaking about, and express it in numbers, you know something about it; but when you cannot measure it, when you cannot express it in numbers, your knowledge is of a meager and unsatisfactory kind.”

— *Lord Kelvin, 1883. British mathematician and physicist who determined the value of absolute zero.*

HARC Milestones: Fiscal Year 2016-2017

Coachella Valley Community Health Survey 2016:

Data collection was completed in October 2016. HARC staff cleaned and analyzed the data and produce the 100-page Executive Report, which was released to the public on January 31, 2017. Approximately 180 people attended the event. HARC also made the results of the survey available online in a searchable database, which was also updated on January 31, 2017. Between the release of the data on January 31, 2017 and the end of the fiscal year on June 30, 2017, HARC gave away an additional 150 hard-copy reports, while more than 140 people downloaded the online version of the report and more than 50 used the online searchable database to access the information.

HARC also obtained a \$10,000 grant from the Auen Foundation to fund a special report focused on senior health, which was released during fiscal year 17-18.

Client Services:

During Fiscal Year 2016-2017, HARC worked with 17 different clients to do conduct customized research and evaluation projects. These projects include:

- **ABC Recovery Center:** Evaluation of a project integrating mental health care into a substance abuse treatment program
- **ACT for Multiple Sclerosis (MS):** Evaluation of the “Circulation Therapy and Strength Training” program
- **American Red Cross of the Coachella Valley and Morongo Basin:** Evaluation of a veteran reintegration workshop
- **City of Temecula:** Facilitate the Southwest Riverside County Cancer Care Task Force, including design and implementation of a cancer-related community health needs assessment
- **Clinicas de Salud del Pueblo:** Client satisfaction survey design, data collection, and analysis
- **Coachella Valley High School Health Academy:** Evaluation of a health competition and conference on high school health academy students
- **Coachella Valley Unified School District:** Community needs assessment for Head Start
- **Coachella Valley Volunteers in Medicine:** Research exploring what motivates current volunteers, what could be improved for current and former volunteers, and what would motivate potential volunteers in the future
- **Desert AIDS Project:** Research and evaluation for the Get Tested Coachella Valley public health campaign regarding HIV testing
- **Desert Sands Unified School District:** Community needs assessment for Head Start
- **Eisenhower Medical Center:** LGBTQIA+ (lesbian, gay, bisexual, transgender, queer, questioning, intersex, asexual) community health needs assessment for the Coachella Valley
- **Jurupa Unified School District:** Community needs assessment for Head Start
- **Kaiser Permanente Moreno Valley and Kaiser Permanente Riverside:** Creation of an implementation strategy from the results of their community health needs assessment
- **Latino Commission:** Program evaluation of residential substance abuse treatment facilities for teens
- **Mizell Senior Center:** Evaluation of a fall prevention program for seniors
- **Palm Springs Unified School District:** Community needs assessment for Head Start
- **Regional Access Project Foundation (RAP):** Creation of a database of nonprofits in Eastern Riverside County

Collaborations/Initiatives:

- American Evaluation Association
- Association of Fundraising Professionals
- Clinton Health Matters Initiative
- Coachella Valley Disabilities Collaborative
- Get Tested Coachella Valley
- Grant Professionals Association
- Riverside County Health Coalition
- University of California, Riverside, School of Medicine Center for Healthy Communities' Community Advisory Board

Invited Presentations:

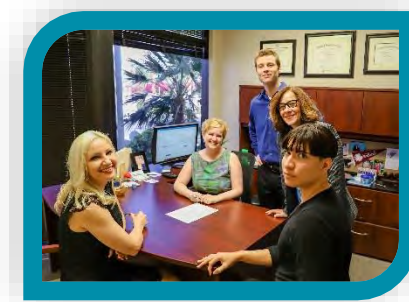
- *Using Data to Improve Community Health*. Presented to the Future Physician Leaders, July 6, 2016 in Palm Desert, CA.
- *Research on Health and Wellness in the Coachella Valley*. Presented to Eisenhower Family Medicine Residents, July 8, 2016 in Rancho Mirage, CA.
- *The Importance of Evaluation*. Presented at the Regional Access Project Foundation's Bidders' Meeting on July 11, 2016 in Palm Desert, CA.
- *The Importance of Evaluation*. Presented at the Regional Access Project Foundation's Bidders' Meeting on September 13, 2016 in Palm Desert, CA.
- *"A Matter of Balance" Program Evaluation Results*. Presented at Mizell Senior Center's celebration of National Fall Prevention Day on September 22, 2016 in Palm Springs, CA.
- *Primary Care and Graduate Medical Education in the Coachella Valley*. Clinton Health Matters Initiative "Improving and Sustaining Health in the Coachella Valley" event, October 28, 2016 in Palm Desert, CA.
- *Using Data to Improve Coachella Valley Health*. Presented to Leadership Coachella Valley, December 9, 2016 in Rancho Mirage, CA.
- *"The Bright Side of Organizational Conflict"*. Presented to the Organizational Communication class at California State University of San Bernardino on March 7, 2017 in San Bernardino.
- *Results from the 2016 Coachella Valley Community Health Survey*. Presented to the staff at the Annenberg Center for Health Sciences, March 20, 2017 in Rancho Mirage, CA.
- *Results from the 2016 Coachella Valley Community Health Survey and Implications for Desert Healthcare District*. Presented to Desert Healthcare District Board and staff at their public strategic planning session on March 23, 2017 in Palm Springs, CA.
- *Women's Healthcare in the Coachella Valley*. Presented as a part of the "Women in Action: Ending Pay Inequality, Healthcare Discrimination, and Violence Against Women" panel discussion on April 2, 2017 in Rancho Mirage, CA.
- *The ACA and Our Local Community*. Presented as part of "The ACA and Single Payer Healthcare: What's Next?" panel discussion on May 7th, 2017 in Rancho Mirage, CA.
- *Identifying and Measuring Outcomes in Nonprofits*. Presented to the Nonprofit Management class at University of Redlands on May 19, 2017 in Redlands, CA.
- *Results from the 2016 Coachella Valley Community Health Survey*. Presented to the Desert Hot Springs Rotary on June 1, 2017 in Desert Hot Springs, CA.
- *Evaluating Get Tested Coachella Valley*. Presented at the Get Tested Coachella Valley event in honor of HIV Testing Day on June 27, 2017 in Palm Desert, CA.

HARC Consulting Services

HARC offers a variety of customized consulting services that are designed to give clients the information they need to make optimal business decisions. HARC works closely with each client to ensure that the services meet the client's needs, timeline, and budget.

Needs Assessment

Our needs assessment services can help you to systematically identify the needs of those you serve or the “gaps” in your services. Results of the needs assessment can then be used to help you prioritize and plan the services you deliver.



Program Evaluation

Program evaluation is the systematic approach of collecting and analyzing information about your program and projects. Our program evaluation services can help you identify the strengths of your program, areas for improvement, and ultimately help you to demonstrate the effectiveness of your program.

Analysis of Existing Data

An analysis of your existing data can provide an in-depth understanding of information you already possess, without the added effort of undergoing the data collection process.

Workplace Wellness

Our workplace wellness services range from helping you start a wellness program, to enhancing your existing wellness program, to helping you demonstrate the success of your program with compelling evidence.

Grant Writing

Our grant-writing services assist you in applying for funding with well-written proposals that incorporate a strong, strategic plan for program evaluation.

Facilitation

Our facilitation services ensure that your team is effective and efficient in achieving your goals. Our process incorporates a logic modeling session to outline the specific goals of your program and ensure that all of your activities are aligned with those goals. The logic modeling session is critical because it helps you to outline specifically how you will measure your success in meeting your goals.

Training

Our training services can inform your staff on the best practices in research and evaluation. These trainings can equip your staff with the knowledge they need to conduct your own in-house research.

HARC operates as a nonprofit 501(c)(3) organization, funded in part by contributions from community partners, as well as clients who contract with the agency for customized health research. The Palm Desert-based organization formed in 2006, when a consortium of more than 30 public and private organizations invested in health joined together to improve community health and wellness.

Impact

The IMPACT

of HARC's Coachella Valley Community Health Survey

In **5 YEARS**

with the use of HARC's Community Health Survey data

DOZENS

of nonprofit organizations received over

\$12.8 MILLION

from requests that used HARC's data to justify their needs.

This allowed organizations to provide:



Food for the hungry



Transportation for people with disabilities



Free HIV testing



Substance abuse treatment programs



The HARC Community Health Monitor is priceless for developing our grant proposals. Funders want accurate information dealing with the population we serve. HARC provides a valuable tool to address those needs, which has helped us secure several important grants for our health and wellness programs.



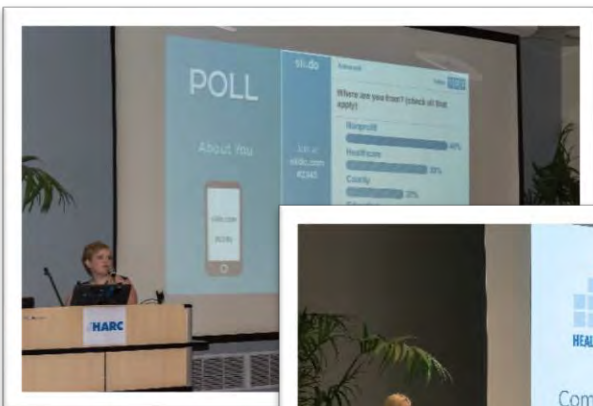
— Rob Ballew, CEO, YMCA of the Desert



Events

Coachella Valley Health Data Release Event:

On January 31, 2017 HARC released the results of the 2016 Coachella Valley Health Survey to the public. More than 175 people attended the event to learn about the results. Attendees participated in the interactive presentation via live polling, and all received a copy of the Executive Report.



2nd Annual Coachella Valley Workplace Wellness Awards:

Local workplaces who prioritize health and wellness received recognition at the 2nd annual Coachella Valley Workplace Wellness Awards, presented by HARC on June 15, 2017.

The aim of the awards is to highlight the efforts of exemplary workplaces that prioritize employee health and well-being, share best practices, and to inspire others to start similar initiatives. HARC views workplace wellness as a critical component of community health in our Valley.

HARC recognized winners in three subcategories (Nutrition/Fitness/Health Screenings, Safety/Ergonomics, and Mental Health/Well-Being) as well as overall grand prize winners who excelled in all three subcategories.

The awards luncheon was made memorable by our Master of Ceremonies, Janet Zappala of KMIR-KPSE. The event was made possible by the event’s sponsors, including Alpha Care, College of the Desert, Desert AIDS Project, Regional Access Project Foundation, Spotlight 29 Casino/Twenty-Nine Palms Band of Mission Indians, California State University San Bernardino Palm Desert Campus, and Clinicas de Salud del Pueblo.



Above left, Grand Prize, Large Organization: Desert Oasis Healthcare/Family Hospice Care.
Above, Grand Prize, Small Organization: MSA Consulting, Inc.

Financial Summary

Audited Condensed Statements of Financial Position for Fiscal Year 2016 – 2017, ending June 30, 2017.

Current Assets

Current Assets	\$565,143
Property and Equipment – Net	<u>2,192</u>
Total Assets	\$567,335

Liabilities and Net Assets

Current Liabilities	\$199,493
Long-Term Liabilities	<u>0</u>
Total Liabilities	\$199,493

Net Assets	\$367,842
Total Liabilities and Net Assets	\$567,335

Revenues

Contributions	\$142,207
Grants	391,482
Client Requested Services	125,946
Events	22,495
Interest	<u>712</u>
Total Revenues:	\$682,842

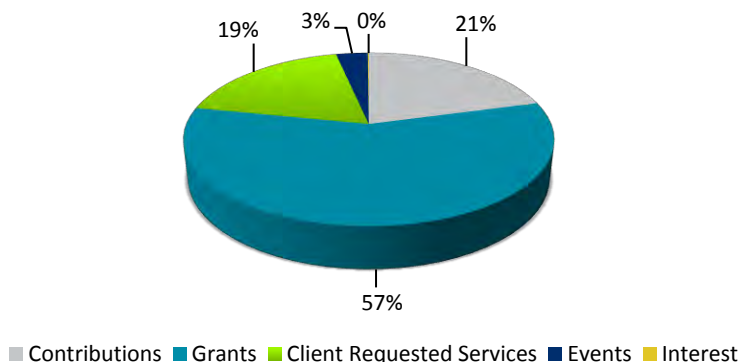
Expenses

Program/Services	\$503,307
Management and General	69,914
Fundraising	<u>29,606</u>
Total Expenses	\$602,827

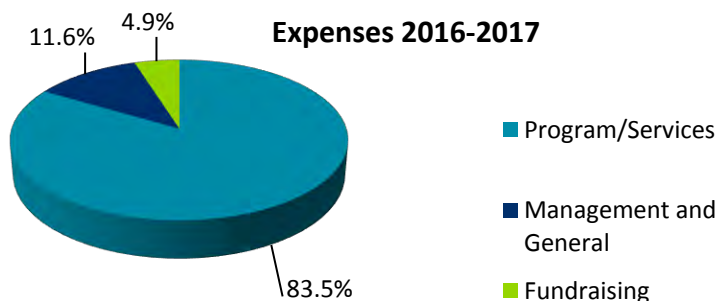
Summary

Increase in Net Assets	\$54,461
Net Assets at End of Year	\$367,842

Revenues 2016-2017



Expenses 2016-2017



FUNDERS, DONORS & SPONSORS 2016 - 2017

Alpha Care Medical Group	Desert Regional Medical Center	Bruce J. Purdy	Anne Montgomery
AmazonSmile	James & Carol Egan	James Santucci	Eileen Packer
Auen Foundation	Eisenhower Medical Center	Anna Lisa Vargas	Regional Access Project (RAP) Foundation
Juliet Broising	Laurence Gelman Living Trust	Glen Grayman	Riverside University Health System - Public Health
Brandon Brown	Mike Gialdini	H. N. and Frances C. Berger Foundation	Brian Rix
California HealthCare Foundation	HARC Board of Directors:	Human Dignity Foundation	Nancy Schneider
City of Coachella	Yvonne Bell	IEHP	Spotlight 29 Casino
City of Desert Hot Springs	David Brinkman	John F. Kennedy Memorial Hospital	The Community Foundation
City of La Quinta	Sharon Brown-Welty	Rosanne Kumins	Amy Sample Ward
Clinicas de Salud del Pueblo	Janet Collins	Jenna LeComte-Hinely	Wells Fargo
College of the Desert	Kendrick Davis	Bruce Lindstrom	
CSUSB Palm Desert Campus	Este Geraghty	Billy Lynch	
Desert AIDS Project	Joel Kinnamon	Robert McKechnie	
Desert Healthcare District	Mary Madison		

Board of Directors & Staff

CURRENT BOARD OF DIRECTORS

President

Janet L. Collins, PhD
Retired
Centers for Disease Control and Prevention

Secretary-Treasurer

Teresa Hodgkins, PharmD, BCACP
Vice President of Clinical Quality Initiatives
Desert Oasis Healthcare

Board Members

Bill Ballas, MS, CFRE
Managing Member
WSB, LLC

David Brinkman, MBA
Chief Executive Officer
Desert AIDS Project

Kendrick Davis, PhD
Associate Dean of Assessment & Evaluation
UC Riverside School of Medicine

Joel L. Kinnamon, EdD
Superintendent/President
College of the Desert

Greer Sullivan, MD
Chief Research Officer
Borrego Health

STAFF

Jenna LeComte-Hinely, PhD
Chief Executive Officer

Cassandra Leier, PhD
Director of Research and Evaluation

Chris Morin, MS
Research and Evaluation Associate

Jerry Quintana, BA
Research and Evaluation Assistant

Theresa Sama
Administrative Manager



MISSION

HARC is dedicated to providing objective, reliable research, analysis, and technical services to communities in order to facilitate better decision making regarding health and quality of life.



**41550 Eclectic Street
Palm Desert, CA 92260
760-404-1945**

www.HARCdata.org

The Coachella Valley's Research Team

