



## Executive Introduction

This past fiscal year has been a year of firsts for HARC, heralding an exciting period of change in our history. In October 2015, HARC transitioned from our first and founding Board President, Dr. Glen Grayman, to our second Board President, Mr. Bruce Purdy. Bruce was already invaluable as a HARC Board Member, and upon becoming President, he and CEO LeComte-Hinely set out to explore new territory for HARC. Briefly, here are some of the “firsts” and other notable events from 2015-2016 for which we are most proud:

In July, HARC hired Dr. Cassandra Leier as the new Director of Research and Evaluation. Dr. Leier has an MS in Industrial/Organizational Psychology from California State – San Bernardino and an PhD in Organizational Communication from Arizona State University. Dr. Leier’s experience with research methods and advanced analytical capabilities make her an invaluable addition to our team.

A few months later, HARC made another excellent addition to the team by hiring Indio native, Ms. Ivy Torres. Ivy has a BS in Developmental Sociology from Cornell University, and an MA in Mexican American Studies from San Jose State University. She brings many assets to HARC, including a wealth of experience in community organizing, many local connections, and a great love of the Coachella Valley.

HARC completed our first out-of-state contract, where we designed a workplace wellness evaluation for Delaware HEAL (Healthy Eating Active Living). This marks the beginning of HARC’s planned expansion to serve communities around California and beyond.

Stepping into the world of philanthropy, HARC hosted our first fundraising events: one at the home of Board Treasurer/Secretary David Brinkman, and followed by another at the Melissa Morgan Fine Art Gallery. These events helped to raise awareness of HARC in the community, and, thanks to our generous hosts and benefactors, helped strengthen our foundation for healthy communities through research. We look forward to learning from these events and enhancing our philanthropic activities in fiscal year 2016-2017.

In February 2016, HARC kicked off data collection for the fourth Coachella Valley Community Health Survey. Data collection spanned the rest of the fiscal year and into the next, finalizing in over 2,500 completed surveys. We look forward to sharing the results with you next year!

In May 2016, HARC was named Nonprofit of the Year at the second annual Desert Health® Wellness Awards. These awards honor people and organizations in the Coachella Valley that are moving health and wellness forward and creating a positive impact on the well-being of the community. HARC faced stiff competition, and we are thrilled to have brought home the “Welly” award.

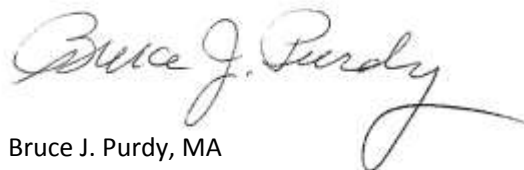
In June 2016, HARC hosted Coachella Valley’s first-ever Workplace Wellness Awards, highlighting employers around the Valley that go above and beyond to protect and promote the health of their workforce. HARC gave out awards to large and small organizations in a variety of categories, ultimately recognizing eight exemplary workplaces in the Valley. The event was extremely popular, and will become one of the mainstays of HARC’s future by helping to share vital information about all areas of wellness in the workplace.

Throughout all this change, HARC continues to provide the data that is necessary to keep our Coachella Valley community healthy and vibrant. We are constantly growing and continuing to collaborate and innovate to improve the health of all residents of our Valley. Thank you to all of our partners and funders for their support; we could not be the resource we are today without you. We look forward to another year of growth and progress.

Sincerely,



Jenna LeComte-Hinely, PhD  
Chief Executive Officer



Bruce J. Purdy, MA  
President of the Board



## Table of Contents

Executive Introduction .....	2
HARC Milestones: Fiscal Year 2015-2016 .....	4 - 5
<i>2013 Health Needs Assessment</i> .....	4
<i>2016 Health Needs Assessment</i> .....	4
<i>Client Services</i> .....	4
<i>Collaborations/Initiatives</i> .....	5
<i>Invited Presentations</i> .....	5
HARC Services .....	6
<i>Research</i> .....	6
<i>Evaluation</i> .....	6
<i>Consulting</i> .....	6
<i>Data Analysis</i> .....	6
<i>Needs Assessment</i> .....	6
Impact .....	7
Financial Summary 2015-2016.....	8
Funders/Contributors 2015-2016 .....	8
Board of Directors & Staff .....	9

**“I often say that when you can measure what you are speaking about, and express it in numbers, you know something about it; but when you cannot measure it, when you cannot express it in numbers, your knowledge is of a meager and unsatisfactory kind.”**

— *Lord Kelvin, 1883. British mathematician and physicist who determined the value of absolute zero.*

## HARC Milestones: Fiscal Year 2015-2016

### 2013 Health Needs Assessment:

In fiscal year 2015-2016, HARC released the following special reports based on the 2013 Health Needs Assessment data:

- Special Report on the Health of Uninsured Adults
- Special Report on Adults with Diabetes

### 2016 Health Needs Assessment:

HARC received funding from the Desert Healthcare District in November 2016 to begin the 2016 Health Needs Assessment. Data collection was somewhat delayed upon the request of the funder to add additional questions to the instrument regarding food insecurity. Data collection commenced on February 19, 2016. As of June 30, 2016, 69% of data collection was complete.

### Client Services:

- ACT for Multiple Sclerosis (MS): Evaluation of the “Circulation Therapy and Strength Training” program.
- Association of Fundraising Professionals, Desert Communities Chapter: Diversity membership survey
- Delaware HEAL: Design of an employee wellness program evaluation
- Desert AIDS Project: Research and evaluation for the Get Tested Coachella Valley public health campaign regarding HIV testing
- Latino Commission: Program evaluation of residential substance abuse treatment facilities for teens
- Mizell Senior Center: Evaluation of a fall prevention program roll-out for seniors across the Valley
- Regional Access Project Foundation (RAP): Analyzed survey results to document the impact of grant dollars on food insecurity in the Coachella Valley
- Safe Schools Desert Cities: Program evaluation of an LGBT Youth Leadership Summit
- San Diego LGBT Senior Healthcare Needs Assessment
- Susan G. Komen Los Angeles: Community health assessment regarding breast health

### Collaborations/Initiatives:

- American Evaluation Association
- Association of Fundraising Professionals
- Clinton Health Matters Initiative
- Coachella Valley Disabilities Collaborative
- Healthcare Industry Council, a part of the Coachella Valley Economic Partnership
- Latino Outreach Network
- Riverside County Community Indicators Task Force
- Riverside County Health Coalition

## Invited Presentations:

- *Child Health in the Coachella Valley*. Presented to the Principals' Summit of the Alliance for a Healthier Generation, June 15, 2016 in Palm Desert, CA.
- *Identifying and Measuring Outcomes in the Nonprofit Sector*. Presented to the Nonprofit Management class at the University of Redlands, May 19, 2016 in Redlands, CA.
- *Disabilities and Health in the Coachella Valley*. Presented to the Coachella Valley Disability Collaborative, April 27, 2016, in Rancho Mirage, CA.
- *The Value of, and Best Practice for an Effective Evaluation*. Workshop presented to the Association of Fundraising Professionals, Desert Communities Chapter, April 15, 2016 in Rancho Mirage, CA.
- *Health of Uninsured Adults in the Coachella Valley*. Presented to Desert AIDS Project (DAP), March 30, 2016 in Palm Springs, CA.
- *Health of Uninsured Adults in the Coachella Valley*. Presented to Coachella Valley Volunteers in Medicine (CVVIM), March 18, 2016 in Palm Springs, CA.
- *Career Options in Community Health Research*. Presented to United Schools, March 17, 2016 in Palm Desert, CA.
- *Evaluation: What It Is and Why You Want It*. Presented to the Grant Professionals Association, Inland Empire Chapter, January 14, 2016 in Riverside, CA.
- *Health in the Coachella Valley*. Presented to the Leadership Coachella Valley cohort of 2015 December 11, 2015 in Rancho Mirage, CA.
- *Leadership in the Service Sector*. Panelist at the University of Redlands forum, December 3, 2015 in Redlands, CA.
- *Utilizing Research and Data*. Panelist at the Regional Access Project Foundation's 2015 Communications Conference "Changing Lives, Making Impact", October 21, 2015 in Rancho Mirage, CA.
- *Using Population Data to Improve Community Health*. Presented to The Rotary Club of Cathedral City, October 6, 2015 in Cathedral City, CA.
- *Using Data to Improve Community Health: An Example from the Coachella Valley*. Panelist at the Community Clinic Association of San Bernardino County's "Whole Health: Engagement and Innovation" Conference, September 17, 2015 in Ontario, CA.
- *Agents of Change for Social Justice*. Presented to Torres Martinez Tribal TANF, August 5, 2015 in Palm Desert, CA.
- *Research Methods and Statistics for Medical Residents*. Presented to the University of California, Riverside School of Medicine Family Medicine Residents at their Noon Conference at Las Palmas Medical Plaza, July 30, 2015 in Palm Springs, CA.
- *Health Disparities in the Inland Empire*. Presented to the Future Physician Leaders at University of California, Riverside, July 30, 2015, in Palm Desert, CA.
- *Environmental Justice Challenges in the Coachella Valley*. Panelist at the California State University Disadvantaged Communities Center Conference, July 23, 2015 in Palm Desert, CA.

## HARC Consulting Services

HARC offers a variety of customized consulting services that are designed to give clients the information they need to make optimal business decisions. HARC works closely with each client to ensure that the services meet the client's needs, timeline, and budget.

### Needs Assessment

Our needs assessment services can help you to systematically identify the needs or “gaps” in your services, which can then be used to prioritize your needs.

### Program Evaluation

Program evaluation is the systematic approach of collecting and analyzing information to better understand your program and projects. Our program evaluation services can help you identify strengths of your program, areas for improvement, and ultimately help you to demonstrate the effectiveness of your program.

### Analysis of Existing Data

An analysis of your existing data can provide useful and actionable information, without the added effort of undergoing the data collection process.

### Workplace Wellness

Our workplace wellness services range from helping you start a wellness program, to enhancing your program, to demonstrating the effectiveness of your program

### Grant Writing

Our grant-writing services assist you to competitively applying for funding with well-written proposals that incorporate a strategic plan for program evaluation.

### Logic Modeling

Logic modeling sessions help to outline the goals of your program and ensure all of your activities are aligned with these goals. The logic modeling session is critical for evaluating your program in that it helps to determine how you will measure your success.

### Training

Our training services can inform your staff on the best practices in research and evaluation. These trainings can equip your staff with the knowledge they need to conduct your own in-house research.



HARC operates as a nonprofit 501(c)(3) organization, funded in part by contributions from community partners, as well as clients who contract with the agency for customized health research. The Palm Desert-based organization formed in 2006, when a consortium of more than 30 public and private organizations invested in health joined together to improve community health and wellness.

Impact

# The IMPACT

## of HARC's Coachella Valley Community Health Survey

In **5 YEARS**

with the use of HARC's Community Health Survey data

**DOZENS**

of nonprofit organizations received over

**\$12.8 MILLION**

from requests that used HARC's data to justify their needs.

This allowed organizations to provide:



Food for the hungry



Transportation for people with disabilities



Free HIV testing



Substance abuse treatment programs

“The HARC Community Health Monitor is priceless for developing our grant proposals. Funders want accurate information dealing with the population we serve. HARC provides a valuable tool to address those needs, which has helped us secure several important grants for our health and wellness programs.”

— Rob Ballew, CEO, YMCA of the Desert



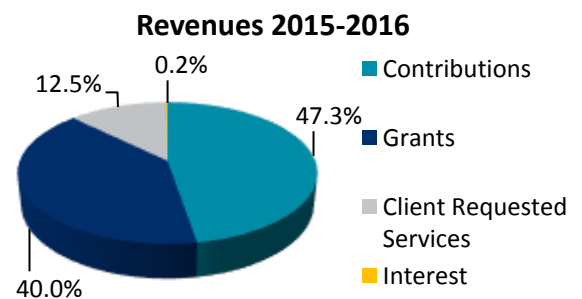
## Financial Summary

Audited Condensed Statements of Financial Position for the Fiscal Years Ending June, 2016 and June, 2015.

	2015 - 2016	2014 - 2015
<b>Current Assets</b>		
Current Assets	\$766,977	\$380,144
Property and Equipment – Net	<u>4,833</u>	<u>4,116</u>
<b>Total Assets</b>	<b>\$771,810</b>	<b>\$384,260</b>
<b>Liabilities and Net Assets</b>		
Current Liabilities	\$225,117	\$73,764
Long-Term Liabilities	<u>233,312</u>	<u>7,130</u>
<b>Total Liabilities</b>	<b>\$458,429</b>	<b>\$80,894</b>
Net Assets	\$313,381	\$303,366
<b>Total Liabilities and Net Assets</b>	<b>\$771,810</b>	<b>\$384,260</b>

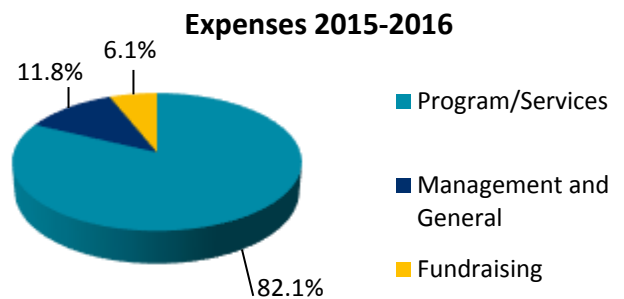
### Revenues

Contributions	\$235,536	\$126,687
Grants	198,799	209,786
Client Requested Services	62,409	59,370
Interest	<u>837</u>	<u>1,011</u>
<b>Total Revenues:</b>	<b>\$497,581</b>	<b>\$396,854</b>



### Expenses

Program/Services	\$400,344	\$312,959
Management and General	57,538	34,093
Fundraising	<u>29,684</u>	<u>39,569</u>
<b>Total Expenses</b>	<b>\$487,566</b>	<b>\$386,621</b>



### Summary

Increase in Net Assets	\$10,015	\$10,233
<b>Net Assets at End of Year</b>	<b>\$313,381</b>	<b>\$303,366</b>

### FUNDERS & DONORS 2015 - 2016

AmazonSmile	Mark Gauthier	John F. Kennedy Memorial Hospital	Riverside County Office on Aging
Len Betz	Mike Gialdini	Kaiser Foundation Hospital - Moreno Valley	Riverside University Health System - Public Health
Kevin Bass & Brent Bloesser	HARC Board of Directors:	Reisha S. & Robert D. Kennison	Eileen Packer
Brandon Brown	Yvonne Bell	Rosanne Kumins	Theresa Sama
California Foundation for Stronger Communities	David Brinkman	Jenna LeCompte-Hinely	Sara Sanders
California Healthcare Foundation	Sharon Brown-Welty	John Lienhard	Nancy Schneider
Orson R. Dee	Este Geraghty	Sarah Mack	Wayne Soucy
Desert Healthcare District	Glen Grayman	John Marksbury	Chuck Steinman
Desert Oasis Healthcare	Joel Kinnamon	Dolores Martinez	Maureen Strohm
Desert Regional Medical Center	V. Manual Pérez	Anne Montgomery	Supervisor John J. Benoit, Fourth District, Riverside County Board of Supervisors
James & Carol Egan	Bruce J. Purdy	Luz Moreno	The California Endowment
Eisenhower Medical Center	Russ Russell	Melissa Morgan Fine Art	The Gas Company
First 5 Riverside	Anna Lisa Vargas	Riverside University Health System – Behavioral Health	Aurora Wilson
First Foundation Bank	Peter Hirsch		
	Human Dignity Foundation		
	IEHP		
	Gary Jeandron		



## Board of Directors & Staff

### CURRENT BOARD OF DIRECTORS

#### President

**Bruce J. Purdy, MA**  
President, Purdy International Consulting

#### Secretary-Treasurer

**David Brinkman, MBA**  
Chief Executive Officer, Desert AIDS Project

#### Board Members

**Yvonne Bell, MBA**  
Chief Executive Officer, Clínicas de Salud del Pueblo

**Sharon Brown-Welty, EdD**  
Dean, California State University, San Bernardino  
Palm Desert Campus

**Janet L. Collins, PhD**  
Retired, Centers for Disease Control and Prevention

**Kendrick A. Davis, PhD**  
Associate Dean of Assessment and Evaluation,  
UC Riverside School of Medicine

**Este Geraghty, MD, MS, MPH, CPH, GISP**  
Chief Medical Officer and Health Solutions Director,  
Esri

**Joel L. Kinnamon, EdD**  
Superintendent/President, College of the Desert

**Mary Madison, MA**  
Principal, MM Consulting

**Jim Santucci, CLS (ASCP), MBA, FACHE**  
Chief Operating Officer, Desert Regional Medical  
Center

**Anna Lisa Vargas**  
Community Organizer, Communities for a New  
California

### STAFF

**Jenna LeComte-Hinely, PhD**  
Chief Executive Officer

**Cassandra Leier, PhD**  
Director of Research and Evaluation

**Ivy Torres, MA**  
Research and Evaluation  
Associate

**Theresa Sama**  
Executive Assistant



## VISION:

*HARC will be the primary source for research used to inform and improve community health and well being.*



**75080 Frank Sinatra Drive, Suite A221**

**Palm Desert, CA 92211-5202**

**760-404-1945**

**[www.HARCdata.org](http://www.HARCdata.org)**

*Coachella Valley's Research Team*

